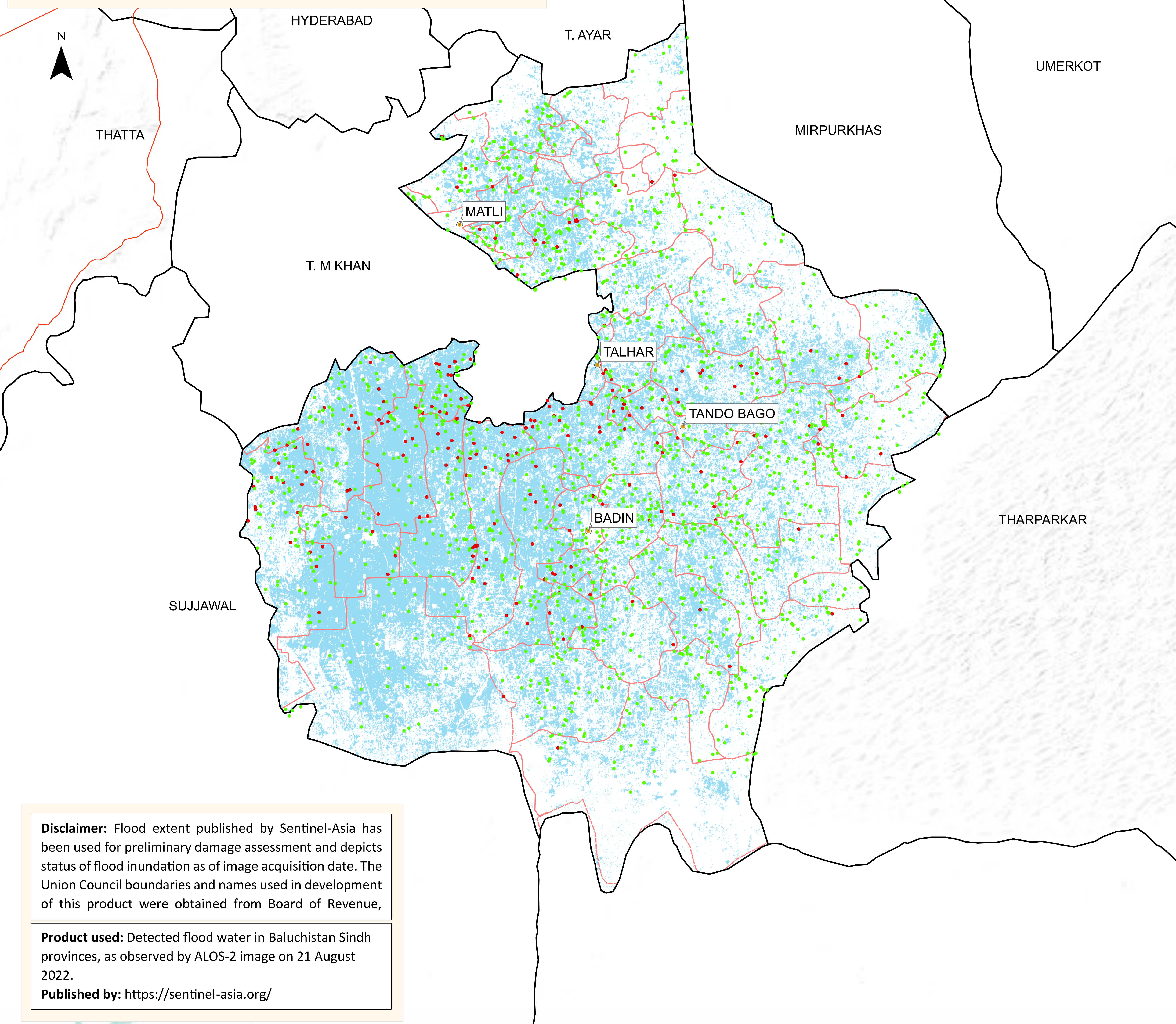


# Flood Inundation in Badin District



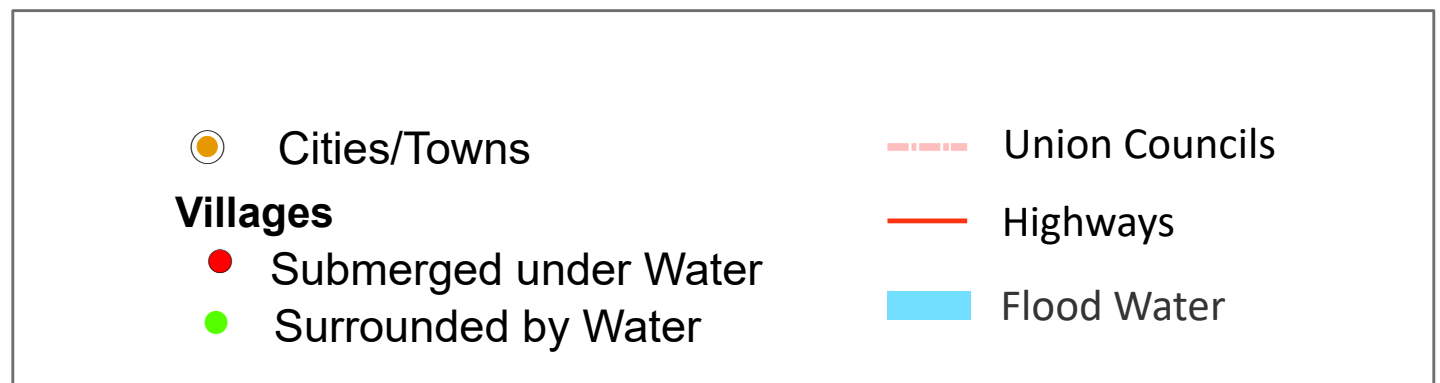
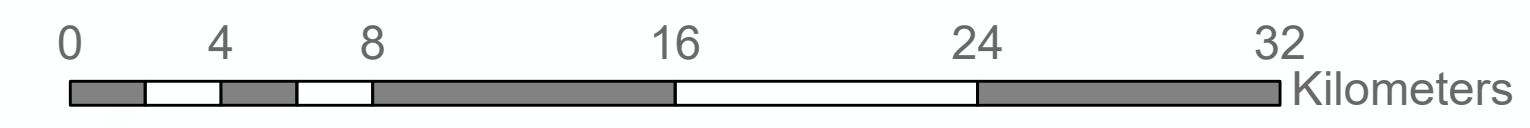
District Profile		
District Area	6,470 Sq.Km	41.05%
Area Inundated	2,656.16 Sq.Km	
Crop Land	1,270,209.25 Acres	46.44%
Crop Land Inundated	589,882.95 Acres	
Rainfall (Jul-Aug)	538 mm	
Population (as per 2017 Census)	1,721,289	
Affected Union Councils	47 Out of 47	

UC-Wise Affected Villages		
Name	Submerged in Water	Surrounded by Water
	21/08/2022	21/09/2022
ABDULLAH SHAH	2	53
AHMED RAJO	2	40
BADIN 01	-	4
BADIN 02	3	31
BADIN 03	4	22
BHUGRA MEMON	1	27
BUDHO QAMBRANI	1	20
CHABRALO	9	59
DADHA	3	28
DEI JARKAS	1	40
DUBI	14	61
DUMBALO	2	16
GHULAM SHAH LAGHARI	-	9
HAJI SANWAL	9	81
HALE POTA	-	12
KADHAN	-	23
KADI KAZIA	6	48
KARIO	20	48
KHADHARO	-	32
KHALIFO QASIM	3	90
KHOR WAH	17	69
KHOSKI	2	45
LUNWARI SHARIF	3	37
MALHAN	4	49
MANIK LAGHARI	-	46
MATLI 01	-	12
MATLI 02	2	11
MOHAMMAD KHAN BHURGRI	5	72
NINDO SHAHAR	-	40
PANGRIO	3	28
PEHAR MARI	8	55
PERO LASHARI	17	73
PHARKARA	6	61
RAJO KHANANI	3	32
RAKHI	13	28
S.F.RAHU	4	26
SAEEDPUR	11	48
SEERANI	4	73
TALHAR	1	9
TANDO GHULAM ALI	-	11
TANDOBAGO	4	34
TARAI	13	55
THARI	4	55

**Disclaimer:** Flood extent published by Sentinel-Asia has been used for preliminary damage assessment and depicts status of flood inundation as of image acquisition date. The Union Council boundaries and names used in development of this product were obtained from Board of Revenue,

**Product used:** Detected flood water in Baluchistan Sindh provinces, as observed by ALOS-2 image on 21 August 2022.

**Published by:** <https://sentinel-asia.org/>



Sources: Esri, USGS, NOAA, Sources: Esri, Garmin, USGS, NPS